



*Troutdale Historical Society*

# BYGONE TIMES

---

## Mark Your Calendars!

*July 20  
Summerfest in Troutdale.  
Come to the Depot or the Barn and watch the Parade, which starts at 11 a.m.*

---

**Harlow House and Barn Museum openings:**

**10 a.m. to 2 p.m.  
Saturday, May 18  
Saturday, June 15  
Saturday, July 20  
Saturday, Aug. 17**

**Or by appointment**

**503-661-2164**

---

**In the Fall:  
Stay tuned for a new round of winter programs beginning in September.**



## May 18 Cemetery Tour

**To Salem area's historic cemeteries and Schreiner's Iris Gardens.**

**O**ur cemetery historian/tour leader Stan Clarke knows where the bones are buried and where they are not. In case you missed it, a story in the April 7 Oregonian told of the placing of two gravestones at Riverview Cemetery in Portland for Thomas Thorp, and his wife, Mandana, both Civil War veterans.

If you read the rest of it, you found that Thorp was believed to be buried in Corvallis. So, not long ago, a Civil War marker was placed there honoring him. But Stan did a bit more sleuthing, tracked down Mandana's grave in Portland, and discovered that her husband had been moved from Corvallis to a place beside her. That led to a flurry of correspondence in Corvallis from a cemetery official who said: "Guess who isn't buried in our cemetery? People wonder why our cemetery tours are so popular. Stan and his stories are a great part of it. Join us May 18 for our annual tour to Salem's historic cemeteries. The bus will leave the Barn Museum at 9 a.m., Saturday, May 18. The tour is \$10 per person and please bring a sack lunch, a drink, and wear comfortable shoes and clothes. For more information call the office, 503-661-2164, to make your reservations.

---

## Clarence Mershon Honored

Clarence Mershon, historian of the Historic Columbia River Highway, was twice honored at our April 21 annual meeting. Clarence is ill and in hospice. Our program on him was a video prepared by Len Otto. President David Ripma announced Clarence as Member of the Year 2013 and Len Otto said that the highway exhibit committee — now fundraising for a barn exhibit on the historic highway — will dedicate that exhibit to Clarence in honor of his countless contribution to local history. His work on the historic highway is a lasting legacy.

---

## Bridge Party and Brunch draws 80 for highway event

The ghost of highway builder Sam Lancaster and a host of Troutdale citizens dressed in black with top hats (likely Troutdale's city officials didn't look that good back in 1913) gathered at the Sandy River to wish our 100 year old bridge a happy birthday on Saturday, April 20, 2013.



red vest and a frock coat. Darn, it was fun. Caterers Cherie and Steve Wallace provided a tomato Aspic—among other great foods—to add a sense of history (The leftovers went to Zarephath Kitchen's free lunch program in Gresham).

Chet Orloff, former director of the Oregon Historical Society, invoked the ghost of Sam Lancaster.

The event, which was followed by a brunch and Professor Steve Lehl's magic lantern slide show in the Sam K. Cox Hall, was intended to make friends, and a bit of money, for our Historic highway exhibit in the barn. About 80 people joined us for the event, including the Davis/Peetz sisters, Penny Labberton, Elaine Davis and Cathy Peetz, who looked like they stepped off the pages of the Sear Roebuck catalog. Jean Holman and Julie Stewart went for a 1930s look.



The Friends of Vista House were there in turn of the century outfits. Professor Lehl and his wife, Judy, were in their very best duds, Lehl in top hat, silken



Kristin Stallman from the state highway department gave a history of the bridge. Dave Ripma and Mario Ayala put on big black bow ties and ran a small champagne concession

for toasting. Jim Clark of the Gresham Outlook clambered down the east bank of the river and braved flood conditions to get a picture of all of us lined up on the bridge. At the east end,

dressed as a proper Victorian Librarian, Diane Castillo-White did her best to give away birthday cupcakes



to motorists, but there were very few takers. She did give a few people directions, however. The idea, of course, is to begin to gather sponsors at \$1,000 each to help pay the costs of our highway exhibit. Sue Handy has prepared a scale to show our progress, a yellow line running up a black highway.

Please support our important business sponsors!

### Bridge Party Volunteers:

**Thank you all:** At the Harlow House and Barn, Mona Mitchoff and Jim Glenn: Running the cutest little cupcake stand ever, Diane Castillo-White; dish garden centerpieces, Sheila Bozicovich; printing of brochures and the toasting tent, Dave Ripma, Mario Ayala; photographer, Jim Clark; table set-up, emergency backup and general hauling; Sue and Greg Handy, Julie Stewart, Steve, Lehl, Gloria Otto, Gloria and Chris Trabacca; policing, City of Troutdale; speakers/presenters: Chet Orloff, Kristin Stallman, Steve Lehl; graphics and displays, Sue Handy, Jeanette Kloos. Thanks to Jack's Snack N' Tackle for use of their space. And the Oregon Highway Department

And thank you to those who came dressed for the times: At right, Cathy Peetz, Cindy Labberton and Elaine Davis.



### THANK YOU!

#### Donations to Operating!

Richard Kerslake  
Barbara Huston-Freund  
Frances Allard  
Jean Driver  
David Rees  
Mary Andre  
Judy Norby  
James Workman  
Mary Eaton  
Marie Stone

### Thank you renewing members

Laura Anson, Richard Kerslake, Jean Hybskmann, Evelyn Jacobson, Barbara Huston, Sandy Cartisser, Myrna Rhodes, Jean Holman, Larry McGinnis, Jim Glenn, Len Otto, Carolyn Shonk, David Rees, Richard & Linda Paz, Dennis & Mary Bryson, Bonnie Harlow Taylor, James & Oie Workman, Mona Mitchoff, Kris & John Fappas, Heather Mitchoff & Dan DeGraw, Janet & Wayne Van Diver, Mary Ellen McGlothlin, Dale & Bonnie Handy, George & Virginia Perry, Marie Stone, Nick & Barbara Welsh, Zelma Sutherland, Jo & Vaden Callister



### THIS NEEDS YOU!

Can you volunteer at one of our museums for a third Saturday? We have all three museums open on the third Saturday of each month from 10-2 or for a special tour. Take photos at an event? HELP on the newsletter? Dust? Scrapbook? HELP with fundraisers? Do you know or work for a company who would donate goods or services?...Call the office to volunteer. The smallest task helps a lot! **All of these things are part of our mission to gather, preserve and make available the history of our area.**

Please support our important business sponsors!



---

## Bygone Times

---

### Terry's Going Away Party



The Tuesday Ladies said their goodbye to Terry by making her an honorary member.



Thanks to City Hall, Terry's cake was topped with real fruit.



Everyone enjoyed the food. Mona brought the greatest bake beans in the world. Tons of mac and cheese, and Buster's BBQ to top it all off .



After six years with the Troutdale Historical Society, Terry Huston is saying her good-byes to old friends, who humor, and dedication will be hard to replace.

---

Please support our important business sponsors!

---

---

## *Bygone Times*

---

### The Director's Chair

Although, I can not replace Terry, I will do my best to serve all members of the Troutdale Historical Society. I have begun to update the membership database and notice that we have a large membership, which I will be encouraging to become more active. We need your help can you host a museum, help with events, archiving, taking pictures, helping with the news letter, anything you can do will be greatly appreciated.

At this time I realize that many of us have seen our disposable incomes shrink some, however a little of your time is just as important as donating money to help keep The Harlow House and Barn Museums open for the one day a month they are schedule to be open. There are no skill requirements just a pleasant smile and a desire to meet new people and explain your long rich heritage.



**Nell Simien**

We are hoping to get a group of interested members together for host training session this month. If you could spare some time we would love to have you come on down and join us. You may call the office at 503-661-2164 or our website at [www.info@troutdalehistory.org](http://www.info@troutdalehistory.org)

---

**The June and July edition of our THS newsletter will be combined. The deadline for news for June edition is mid-June.**

**If you have a childhood story about growing up in Troutdale that you would like to share please send it to Troutdale Historical Society: 219 East Historic Columbia River Highway, Troutdale, Or. 97060**

---



**Please support our important business sponsors!**



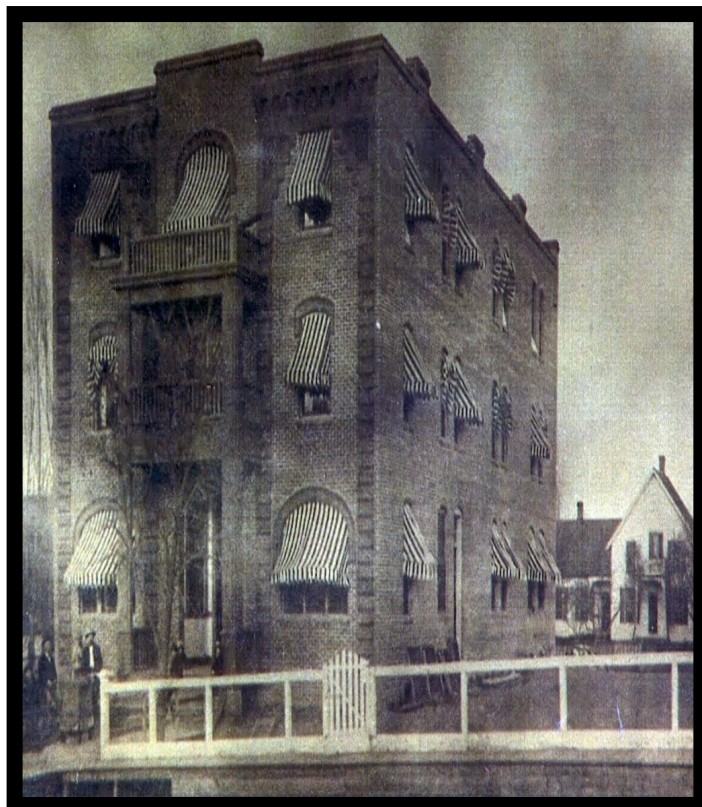
**New**

**M**ember Sharon Petri sends an obituary for Howard H. L. Green who died February 29, 2013 at the age of 73. We did not know him personally, but enjoyed his work of restoring the Balch Hotel in Dufur when we went there on a trek. We had dinner at the hotel that night. Thanks to Ken Funk of the Sandy Historical Society who came to our Centennial Third Grade Tour April 9 dressed as a fur trapper. Ken volunteers at the Sandy Historical Museum researching families, cataloging books and helping set up displays. Thanks, too, to Jim Glenn, author of the great boy adventure stories in our newsletter, who has agreed to host occasionally in the Barn and Harlow House Museums. He was on hand for the third-grade tour, sort of a trial by fire.

Mother Francine Cardew, founding sister of the nuns at Bridal Veil, died in April.

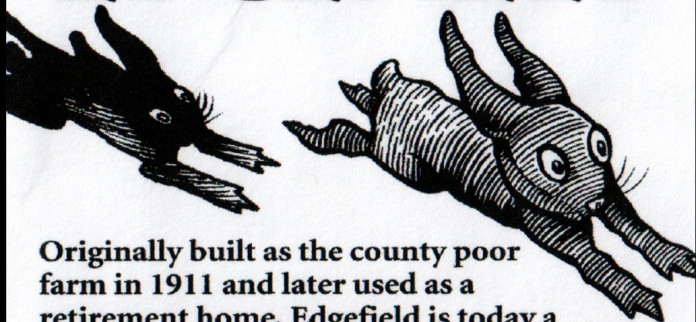
Also, regarding Sandy Historical Society, their quilt show runs from June 27 to June 29, opening at 10 a.m. in the old Sandy High School..

Many thanks to Howard and Patricia Green and the Dufur Historical Society who provided these wonderful historical photos.



Also thanks to Samantha at the Balch Hotel for allowing the Troutdale Historical Society to feature this photo in our newsletter.

# McMENAMINS EDGEFIELD



Originally built as the county poor farm in 1911 and later used as a retirement home, Edgefield is today a national historic landmark featuring a hotel, pubs, restaurants, gardens, distillery, winery, artwork, spa, golf course and beyond...

2126 S.W. Halsey St. • Troutdale • (503) 669-8610  
[mcmenamins.com](http://mcmenamins.com)

Please support our important business sponsors!

## Bygone Times

**mindy schmidt**  **imaging services**

PH 503.805.5008  
 FX 503.695.6711  
 EM mindy@mindyschmidt.com  
 www.mindyschmidt.com  
*graphic design & web development*

*Bob & Ilona* *Brent & Teresa*

**SKIPPER & JORDAN**  
**NURSERY**

WHOLESALE/RETAIL  
*Quality Nursery Stock Direct From Grower*  
 (503) 663-1125

Corner of Orient Dr & Short Rd.  
 29690 S.E. Orient Dr • Gresham, OR 97080

Wholesale (503) 663-0725  
 Fax (503) 663-4245

 *Gresham Memorial Chapel*  
 Family Owned & Operated

**John Gerbisk**

503-618-8176 • Fax 503-618-9738  
 257 SE Roberts • Gresham, Oregon 97080  
 www.greshamfuneral.com

3¢ B&W Copies

 39¢ Color Copies

LEAMY printing & design

105 East Historic Columbia River Highway | Troutdale, Oregon 97060  
 Phone: 503.492.1243 Fax: 503.667.7784

**www.leafmydesign.com**

## Thank You To Our Business Sponsors

**TROUTDALE**  
**General Store**  
 ICE CREAM PARLOR & CONFECTIONERY

*Terry and Jodi Smoke, Proprietors*  
 503-492-7912  
 289 E. Historic Columbia River Hwy., Troutdale Oregon 97060

**Strebin Farms** POTATOES BERRIES

28245 S.E. DIVISION DR.  
 TROUTDALE, OREGON 97060

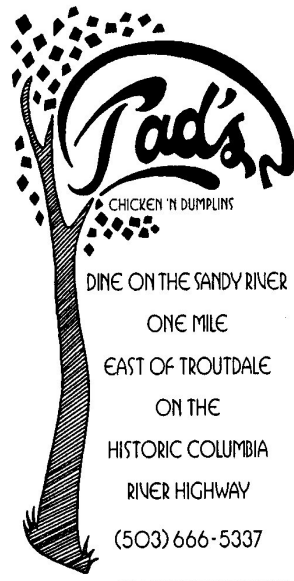
(503) 665-8328  
 FAX: 669-7783

WILLIAM B. STREBIN & SONS

**GROCERY OUTLET**  
*bargain market™*

**Dave & Jill Reilly**  
 Owner/Operators

Grocery Outlet  
 2925 NW Division Street  
 Gresham, OR 97030  
 (503) 492-2044  
 Fax (503) 492-1914  
 gresham@cfgo.com  
 www.groceryoutlets.com

 **Tad's**  
 CHICKEN 'N' DUMPLINGS

DINE ON THE SANDY RIVER  
 ONE MILE  
 EAST OF TROUTDALE  
 ON THE  
 HISTORIC COLUMBIA  
 RIVER HIGHWAY  
 (503) 666-5337  
 WWW.TADSCHICDUMP.COM

Please support our important business sponsors!

## Bygone Times



**Troutdale Historical Society**  
219 E Hist. Col Riv. Hwy.  
Troutdale, OR 97060  
www.troutdalehistory.org  
503-661-2164

### THS Board of Directors

Dave Ripma, President  
Vice President Jean Ice  
Secretary Jean Holman  
Sheryl Maydew, Treasurer  
Scott Cunningham, Past President  
Jean Hybskmann  
Helen Wand, Program Chair  
Paula Goldie  
Jean Holman

#### **Paid Staff**

Nell Simien, Director/Newsletter

#### **Volunteer Staff**

Mary Bryson, Curator  
Office Assistant—OPEN  
Adrienne Clausen,  
Volunteer Host Coordinator  
Jennifer Munson, Librarian  
Dave Munson, Maintenance  
Genealogist—Open  
Carol LaCoste, Scrapbook Archivist  
Julie Stewart, Photo Librarian  
Sharon Nesbit, Photo Historian

**Mission Statement:** To gather, preserve and make available material relating to the history of the community of Troutdale, the Sandy River, the Columbia River Gorge and nearby area: To stimulate interest in and knowledge of, the locality's past.

**Non Profit  
Presorted  
Standard Mail  
Troutdale, OR  
Permit # 5**

Change service requested



### **Remember!**

THS is a 501c3, so your donations are tax-deductible and help support the museums, programs, preservation of artifacts and our local history. Thank you for your continued support!

### **Contributions to Columbia River Highway Exhibit Fund And Fundraisers For the Exhibit**

**Karon Eggers  
Bonnie Jepsen  
Mary McArthur  
Len & Gloria Otto**

Please support our important business sponsors!